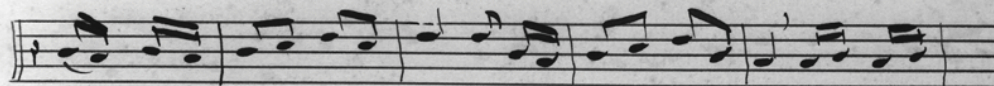
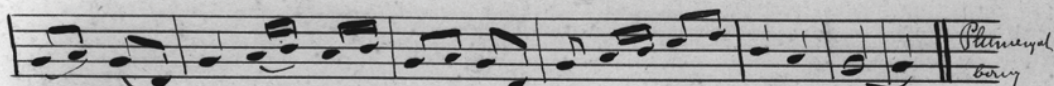


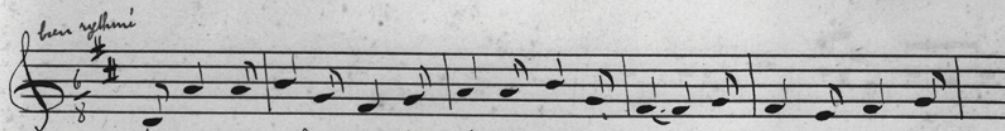
Chi-level ur sonen pleasant sauel ay en ivrogn quant - Chi-level :



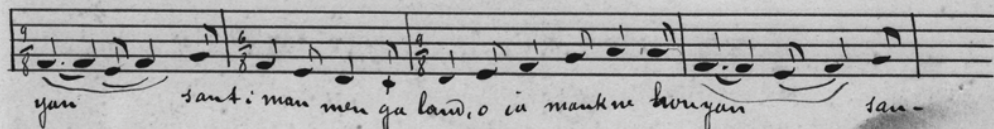
ne - ré n'en doi ket kin sou - si m'ich'moret d'en hoste - le - ri ri'ge - ri'ge -



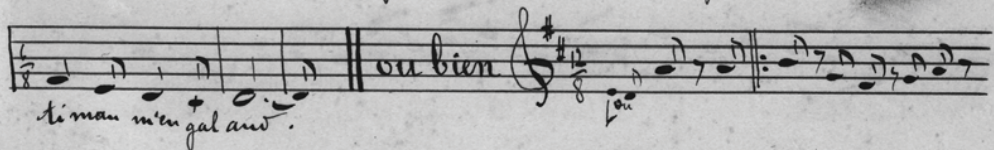
ra lon - la na peh ur uechet e'ho - na foudera ra ra lon - la .



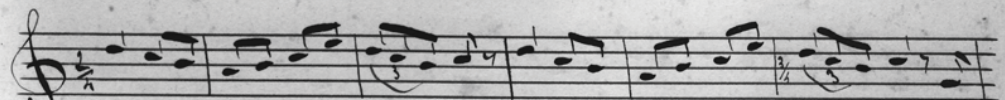
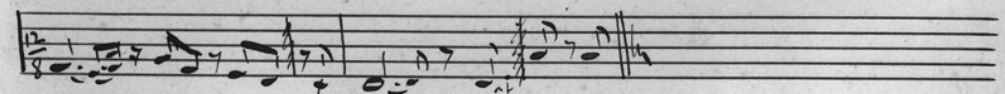
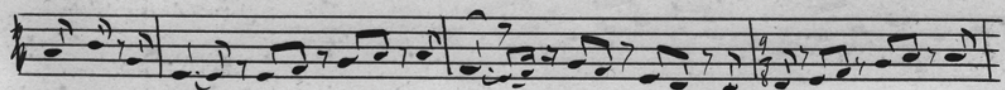
Muyen p'ou e hra dein kale tan ma kavon , o ia , mant ne hori -



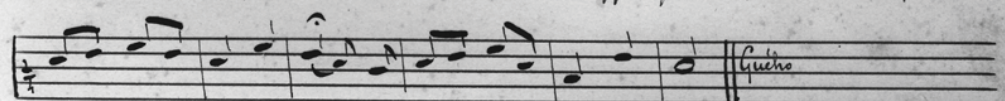
yan sant : man men gal aou , o ia mant ne horiyan san -



ti man men gal aou .



Mi' hori suppli panted kamor , o , me hori suppli panted ka - moro . o , mi



hor suppli panted kamor dit ket d'ur panted de Gado